



English, Spanish &
French Manual

SINCE 1839

BRINLY

OWNER'S MANUAL

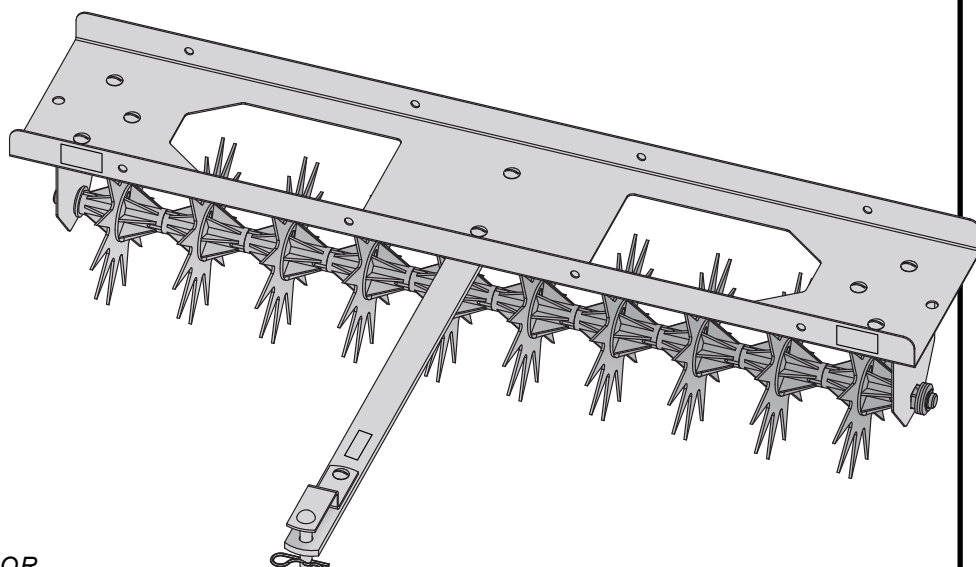
40" LAWN AERATOR

MODEL:

SA-401BH

SA-401BH-A

- Assembly
- Installation
- Operation
- Repair Parts



Scan this QR
code for additional
info on our website.

Call Customer Service, Toll-Free: 877-728-8224

Visit us on the web!
www.brinly.com

Important: This manual contains information for the safety of persons and property. Read it carefully before assembly and operation of the equipment!

INTRODUCTION AND SAFETY

CONGRATULATIONS on the purchase of your new Brinly-Hardy Aerator! Your Aerator has been designed, engineered and manufactured to give you the best possible dependability and performance.

Should you experience any problem you cannot easily remedy, please do not hesitate to contact our knowledgeable customer service department toll-free at 1-877-728-8224. We have competent, well trained technicians to help you with the assembly and use of your product.



CUSTOMER RESPONSIBILITIES

- Please read & retain this manual. The instructions will enable to assemble and maintain your product properly.
- Please carefully read and observe the SAFETY SECTION of this manual.
- Follow a regular schedule in maintaining and caring for your Brinly-Hardy product.

TABLE OF CONTENTS

SAFETY	2-3
PARTS	4-5
ASSEMBLY	6-10
USE AND CARE	
Specifications	11
Installation / Removal	11
Storage	12
Use and Maintenance	12-13
Service	13
WARRANTY	14

RECORD PURCHASE INFORMATION

Record your purchase information in the spaces provided below:

Date of Purchase _____

Company Name _____

Company Phone _____

Serial Number _____

SAFETY



This symbol will help to point out important safety precautions throughout this manual. It means: **ATTENTION! BECOME ALERT! YOUR SAFETY IS INVOLVED.**

REQUIRED TOOLS FOR ASSEMBLY



- Flat Head Screwdriver
- 1/2" Wrench
- Set of Pliers or Hammer
- Safety Glasses
- Gloves

The machine safety labels shown in this section are placed in important areas on your machine to draw attention to potential safety hazards.

On your machine safety labels, the words **DANGER**, **WARNING**, and **CAUTION** are used with this safety-alert symbol. **DANGER** identifies the most serious hazards.

The operator's manual also explains any potential safety hazards whenever necessary in special safety messages that are identified with the word, **CAUTION**, and the safety-alert symbol.

SAFETY

GENERAL NOTES (Operation)

- Use this attachment for intended purpose only.
- Before you operate any feature of this attachment or towing vehicle, observe your surroundings and look for bystanders.
- This attachment is intended for use in lawn care and home applications. Do not tow behind a vehicle on a highway or in any high speed applications. Do not tow at speeds higher than the maximum recommended towing speed.
- Towing speed should always be slow enough to maintain control. Travel slowly over rough terrain. Avoid holes, rocks and roots. Slow down before turning.
- Do not exceed the maximum towing capacity of your towing vehicle.
- Do not tow this product behind a motor vehicle such as a car, truck or ATV.
- Towing this product behind a ZTR (Zero Turn Radius) mower can affect the stability of the mower and is not recommended.
- Additionally, towing this product behind a ZTR mower is not recommended due to the speed and sharp turning ability the ZTR. Damage to this product or ZTR may result.
- Know your towing vehicle controls and how to stop safely, READ YOUR OWNER'S MANUAL before operating.
- Check the towing vehicle brake action before you operate. Adjust or service brakes as necessary.
- Do not allow children to operate the towing vehicle. Do not allow adults to operate the towing vehicle without proper instruction or without having read the owner's manual.
- Always wear substantial footwear. Do not wear loose fitting clothing that can get caught in moving parts.
- Keep your eyes and mind on your towing vehicle, attachment and area being covered. Do not let other interests distract you.
- Stay alert for holes and other hidden hazards in the terrain.
- The towing vehicle and attachment should be stopped and inspected for damage after striking a foreign object. Any damage should be repaired before restarting and operating the equipment.
- Do not drive close to creeks, ditches and public highways.
- Watch out for traffic when crossing near roadways.
- Keep the towing vehicle and attachment in good operating condition and keep safety devices in place.
- Keep all parts in good condition and properly installed. Fix damaged parts immediately. Replace worn or broken parts. Replace all worn or damaged safety and instruction decals. Keep all nuts, bolts and screws tight.
- Do not modify the attachment or safety devices. Unauthorized modifications to the towing vehicle or attachment may impair its function or safety, and it will void the warranty.

TOWING VEHICLE AND TOWING SAFELY

- Read the safety operating precautions in your towing vehicle operator's manual for additional safety information.
- Stopping distance increases with speed and weight of towed load. Travel slowly and allow extra time and distance to stop. Total towed weight must not exceed limits specified in towing vehicle operator's manual.
- Excessive towed load can cause loss of traction and loss of control on slopes.
- Reduce towed weight when operating on slopes.
- Use only approved hitches. Tow this attachment only with a towing vehicle that has a hitch designed for towing. Do not connect this attachment except at the approved hitch point.
- Follow the towing vehicle manufacturer's recommendations for weight limits for towed equipment and towing on slopes. Use counterweights or wheel weights as described in the towing vehicle operator's manual.
- Slow down before you turn and do not turn sharply. Use additional caution when turning or operating under adverse surface conditions.
- When reversing, carefully back-up straight to avoid jack-knifing. Do not allow the towing vehicle's wheels to contact the attachment drawbar. Damage could result.
- Do not shift to neutral and coast downhill.

PROTECT THOSE AROUND YOU

- Keep children, bystanders and pets at a safe distance away while operating this or any attachment.
- Use care when reversing. Before you back up, look carefully behind for bystanders.
- Before you operate any feature of this attachment or towing vehicle, observe your surroundings and look for bystanders.

KEEP RIDERS OFF TOWED ATTACHMENT AND TOWING VEHICLE

- Do not carry passengers.
- Do not let anyone, especially children, ride in/on this attachment, the towing vehicle or hitch bracket. Riders are subject to injury such as being struck by foreign object and/or being thrown off during sudden starts, stops and turns.
- Riders may also obstruct the operator's view resulting in this attachment being operated in an unsafe manner.

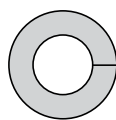
HARDWARE IDENTIFIER

Illustrations on this page are to scale for faster identification of hardware during assembly.

DO NOT RETURN PRODUCT IF YOU ARE MISSING PARTS.
Please Call: 1 (877) 728-8224



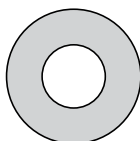
Exterior circumferences of washers can vary.
These dimensions are a measurement of the internal diameter of the washer.



10

Washer;
Lock, 5/16"
(x10)

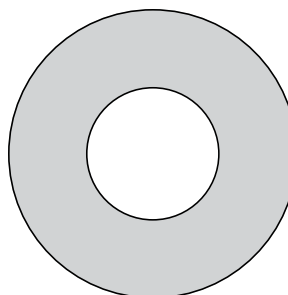
40M1000P



11

Washer;
Flat, 5/16"
(x6)

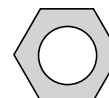
45M1111P



12

Washer;
Flat, 5/8"
(x8)

45M2121P



9

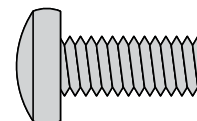
Nut; Hex
5/16"-18
(x10)

30M1000P

7

Screw: Round Head, 5/16"-18 x 3/4" (x6)

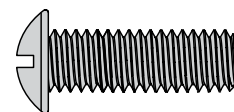
20M1012P



8

Screw: Round Head, 5/16 x 1" (x4)

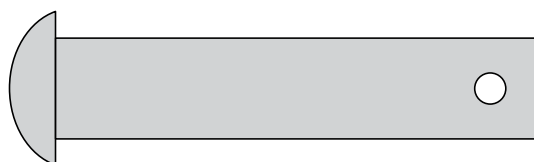
20M1016P



13

Hitch Pin; Drawbar, 1/2" x 2 1/2" (x1)

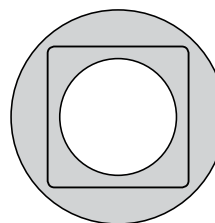
B-3861



14

Square Bearing (x2)

B-6270



15

Hairpin Cotter, 1/8" (x3)

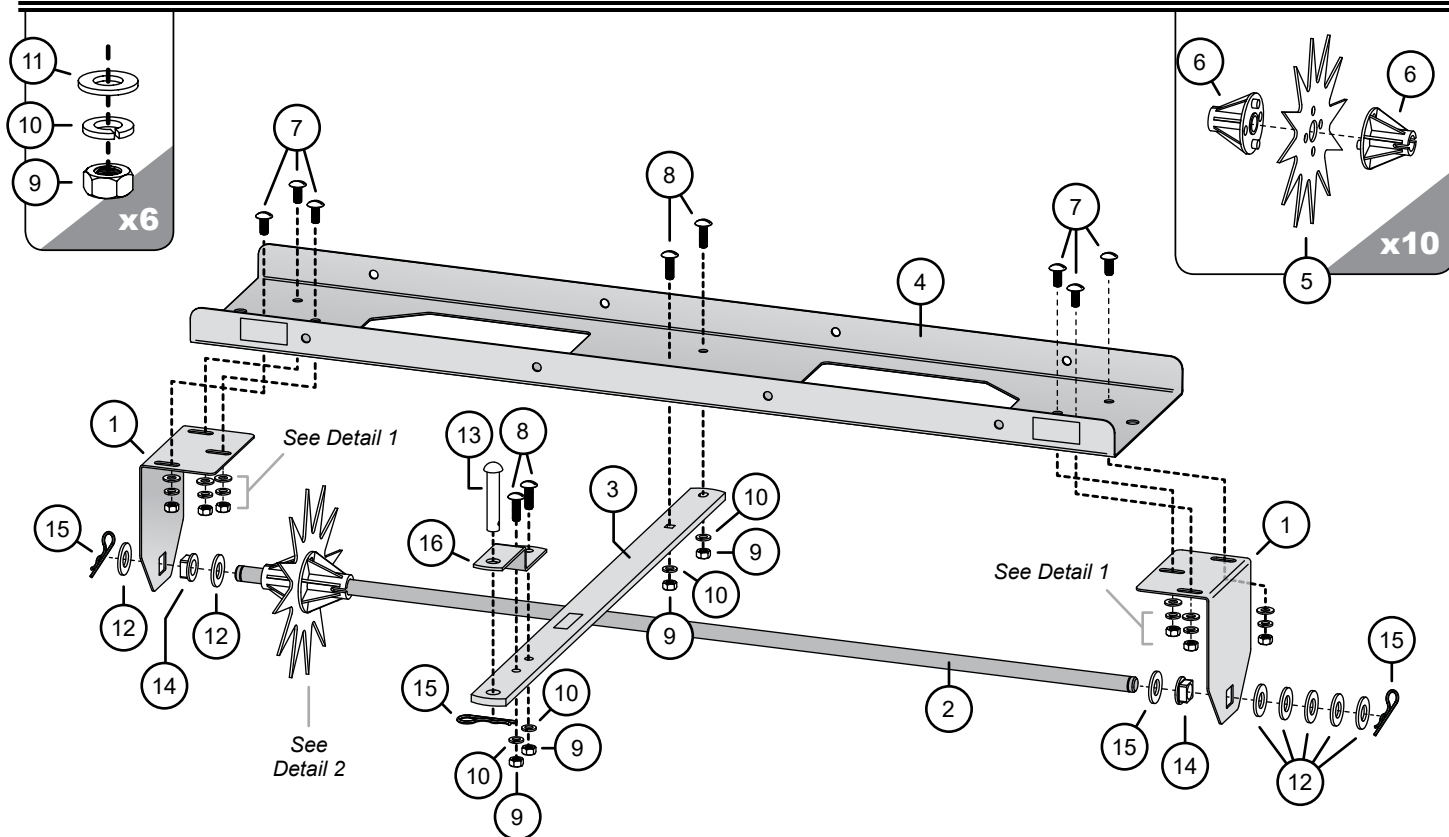
D-146P



PARTS

Detail 1

Detail 2



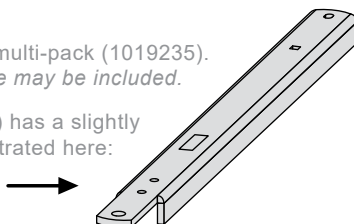
PART #s (vary by model)

Ref.	Description	Qty.	SA-401BH	SA-401BH-A
1	End Panel	2	1008490-10	1008490-10
2	Tine Shaft	1	1019939	1019939
3	Drawbar, w/ Decals	1	B-3593-1	1020062 **
4	Tray, w/ Decals	1	1008589	1020080
5	Tine	10	1018833-SER *	1018833-SER *
6	Bearing	20	B-5425	B-5425

1020063	Hardware Bag	1
7	20M1012P Screw; Round Head 5/16"-18 x 3/4"	6
8	20M1016P Screw; Round Head 5/16" x 1"	4
9	30M1000P Nut; Hex, 5/16"-18	10
10	40M1000P Washer; Lock, 5/16"	10
11	45M1111P Washer; Flat, 5/16"	6
12	45M2121P Washer; Flat, 5/8"	8
13	B-3861 Pin; Hitch, 1/2" x 2-1/2"	1
14	B-6270 Bearing; Square	2
15	D-146P Cotter; Hairpin, 1/8", #211	3
16	R-821-10 DrawBar, Clevis	1

* Tines come in a multi-pack (1019235).
An extra tine may be included.

** The SA-401BH-A drawbar (3) has a slightly
different appearance, illustrated here:



Installation Questions? Missing Parts? Replacement Parts?
DON'T GO BACK TO THE STORE!

Please call our Customer Service Department, Toll Free: 877-728-8224 or customerservice@brinly.com

ASSEMBLY

Assembly Tip

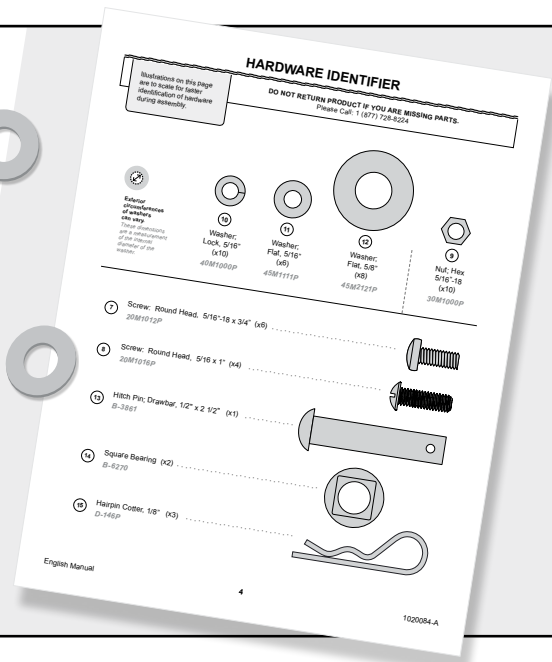
Illustrations on page 4 are to-scale.

For faster identification of hardware during assembly, simply lay the hardware on top of the illustration.



Additional info and videos are available on our website: brinly.com

This QR code links directly to the product page.



Steps 1 & 2

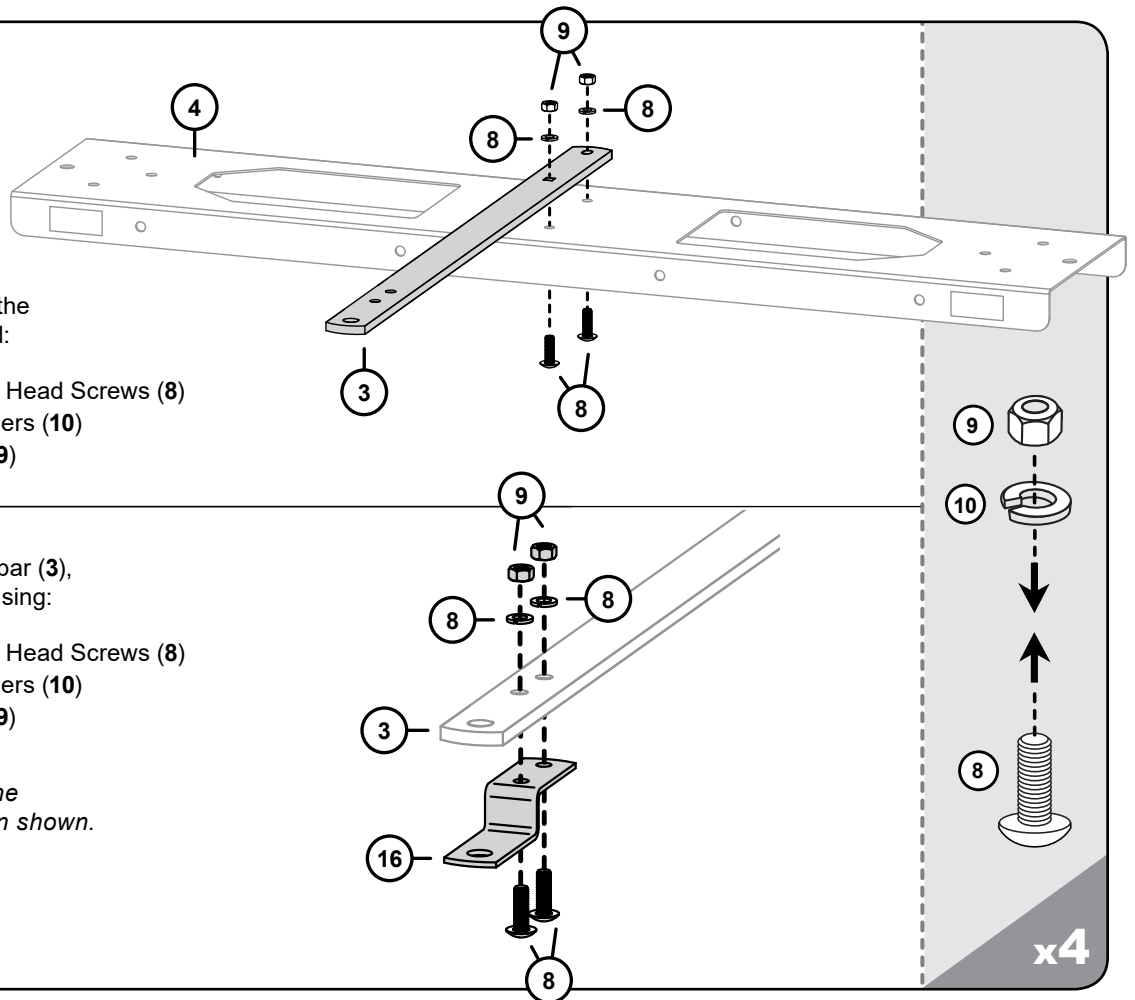
- Align the drawbar (3) with the tray (4) using the following, as illustrated:

- x2 5/16" x 1" Round Head Screws (8)
- x2 5/16" Lock Washers (10)
- x2 5/16" Hex Nuts (9)

- At the end of the drawbar (3), attach the clevis (16) using:

- x2 5/16" x 1" Round Head Screws (8)
- x2 5/16" Lock Washers (10)
- 2x 5/16" Hex Nuts (9)

NOTE: Be sure to align the Clevis (16) in the direction shown.



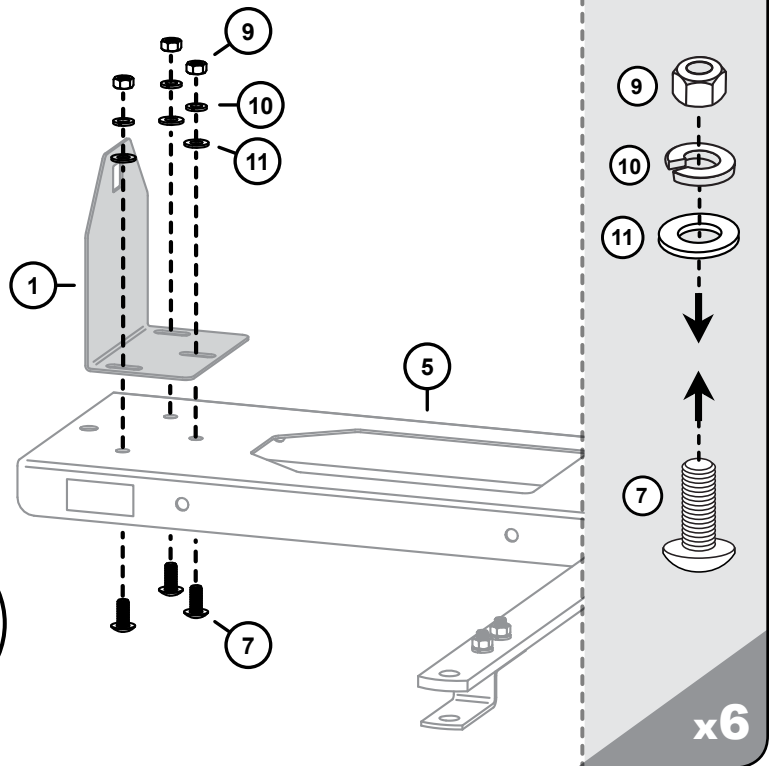
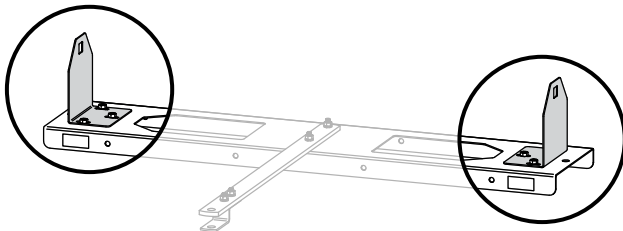
ASSEMBLY

Step 3

3. Install the two end panels (1) on each end of the tray (5) using:

- x6 5/16" x 3/4" Round Head Screws (7)
- x6 5/16" Flat Washers (11)
- x6 5/16" Lock Washers (10)
- x6 5/16" Hex Nuts (9)

NOTE: Leave nuts loose in this step so that the End Panels (1) can be adjusted later.

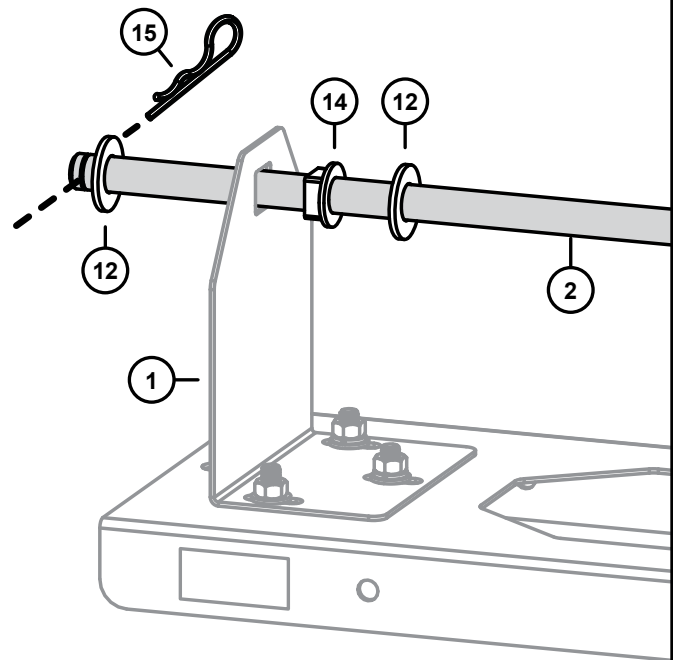
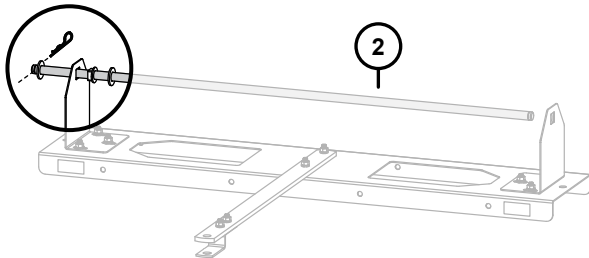


Steps 4 & 5

4. Fasten a Hairpin Cotter (15) on the tine shaft (2) and add a 5/8" Flat Washer (12) on the shaft

As illustrated, push the tine shaft (2) through one end panel (1).

5. Now add a square bearing (14) and then a 5/8" Flat Washer (12) to the Tine Shaft.

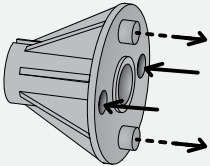


ASSEMBLY

Steps 6 & 7



CAUTION: GLOVES ARE REQUIRED WHEN HANDLING AERATOR TINES.
Tines have extremely sharp points. Use caution when handling.

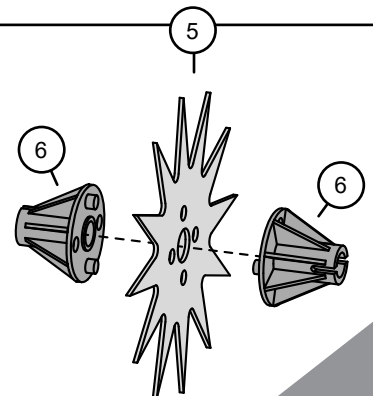
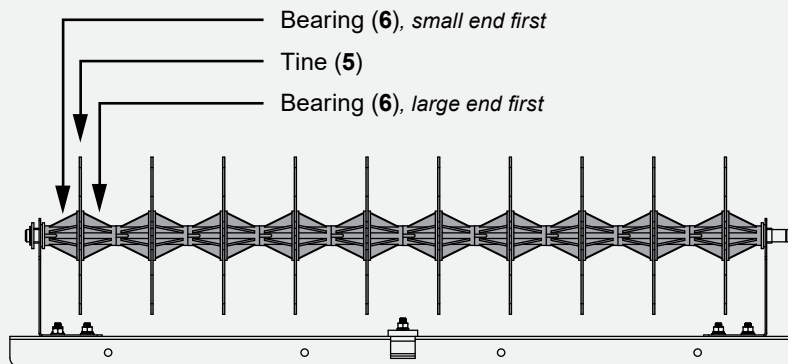
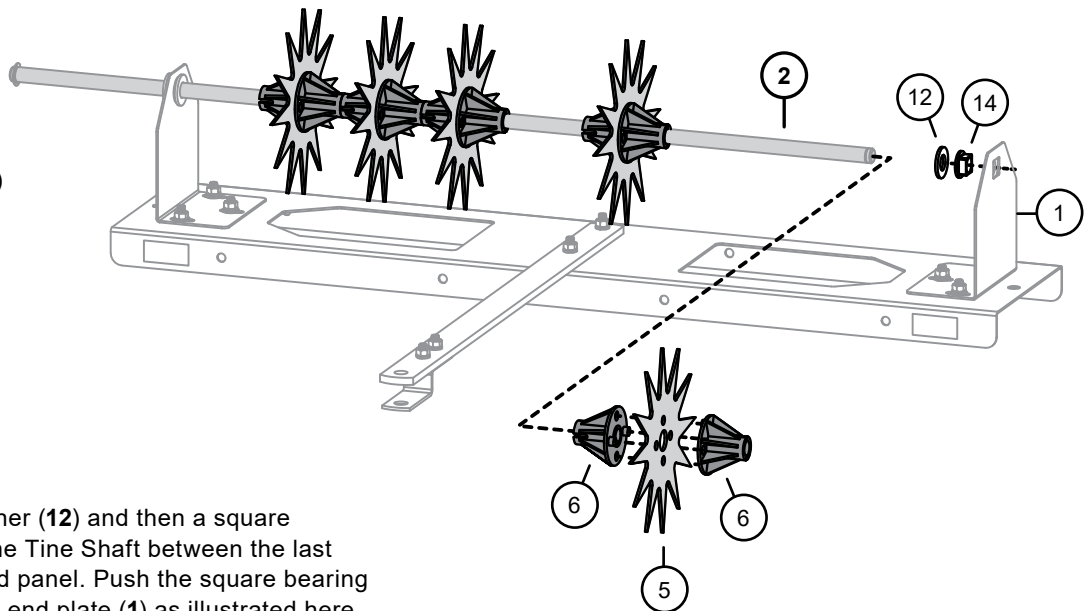


NOTE: The Bearings (6) have two small openings and extensions. These are designed to sandwich the Tines (5), sliding through and connecting.

6. Position the 10 tines (5) and 20 bearings (6) on the tine shaft (2) in the following order:

- Bearing (6)
(small end first)
- Tine (5)
- Bearing (6)
(large end first)

7. Add a 5/8" flat washer (12) and then a square bearing (14) onto the Tine Shaft between the last bearing and the end panel. Push the square bearing into the hole on the end plate (1) as illustrated here.



x10

ASSEMBLY

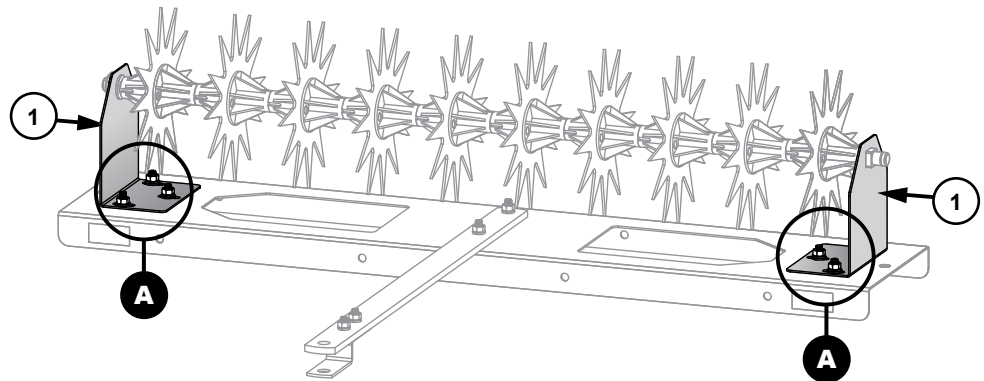
Steps 8 & 9



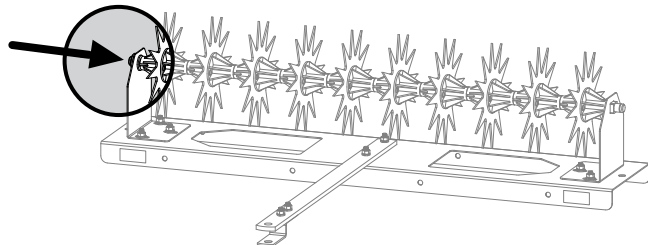
CAUTION: GLOVES ARE REQUIRED WHEN HANDLING AERATOR TINES.
Tines have extremely sharp points. Use caution when handling.

8. Push the End Panels (1) toward the Tines (5) until there is no free play along the Tine Shaft and tighten the nuts (A) on the End Panels. (6 nuts total).

NOTE: *The Square Bearings must be completely inserted into the End Panels before you tighten the nuts.*



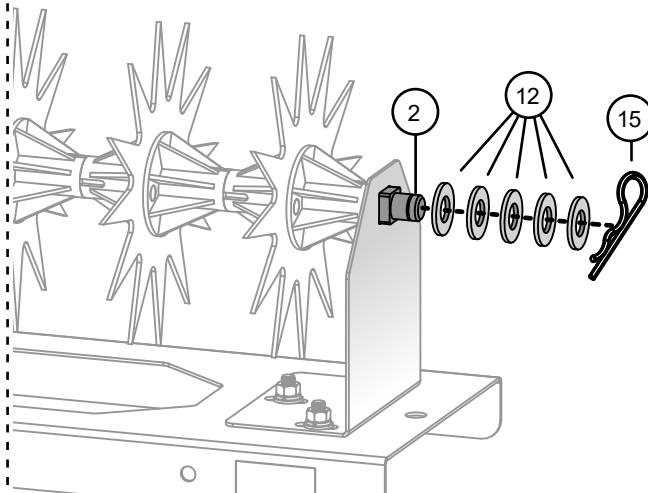
9. Push the end of the tine shaft with the fastened hairpin cotter all the way towards the End Panel.



Next, add as many 5/8" flat washers (12) to the opposite end of the shaft. Add as necessary to eliminate extra space.

Fasten the remaining Hairpin Cotter (15) on the end of the Tine Shaft (2).

NOTE: *Store any extra Flat Washers in a safe location. You may need them for maintenance of End Panel Adjustment.*

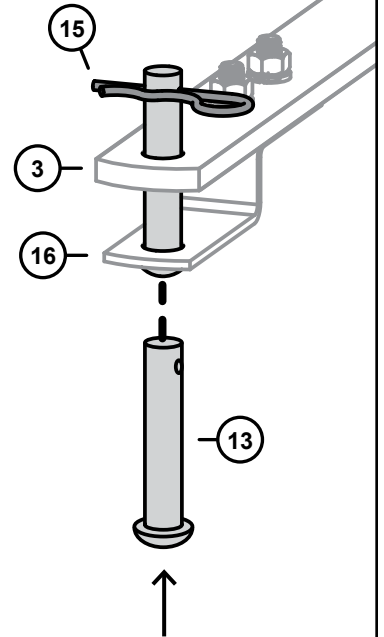
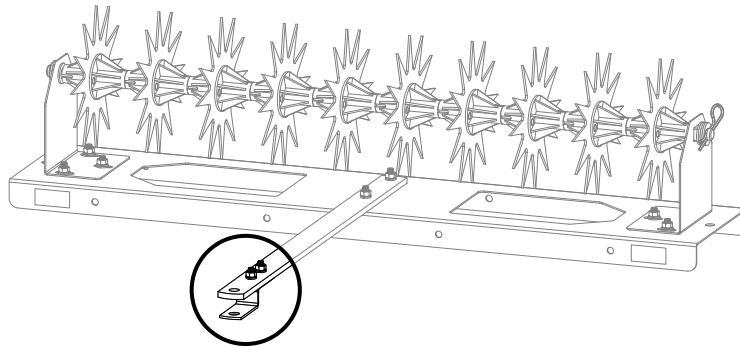


ASSEMBLY

Step 10

10. From below, install a hitch pin (13) through the clevis (16) and tow bar (3), as illustrated.

Secure with the last hairpin cotter (15).



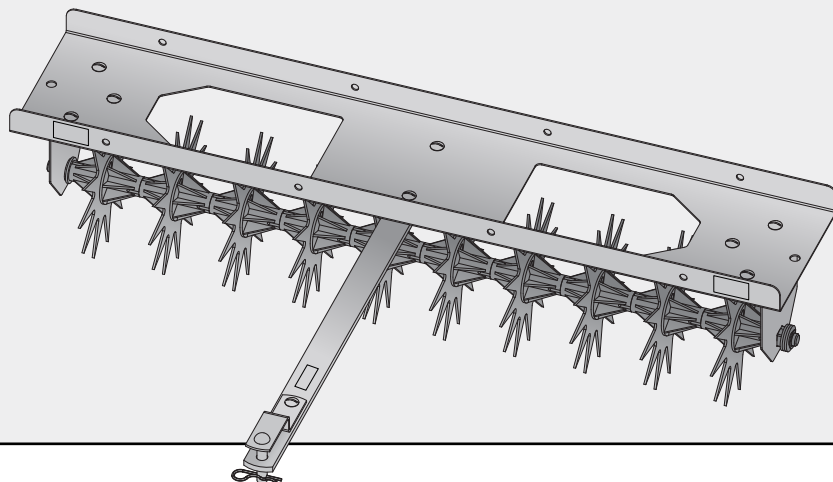
Assembly is Complete!

NOTES

USE AND CARE

MODEL:

SA-400BH USE & CARE SECTION



SPECIFICATIONS

Empty Weight 25 lbs.

Maximum Capacity
of Aerator Tray 110 lbs

Maximum
Towed Weight 135 lbs

SPEED

Best Operating
Speed 3 mph (or less)

Maximum
Operating Speed 5 mph



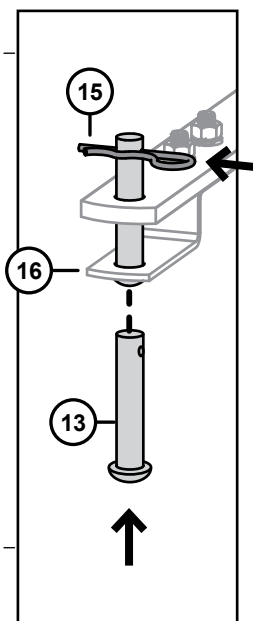
CAUTION: Avoid injury while installing and removing! Make sure feet and hands are clear of Tine Tips.

INSTALLING

1. Park towing vehicle safely and set the parking brake. (*See towing vehicle operator's manual*).
2. Align Aerator Clevis (**16**) with towing machine hitch plate.
3. Install Hitch Pin (**13**) through Clevis (**16**) and towing machine hitch plate.

REMOVING

1. Park towing vehicle safely and set the parking brake (*see towing vehicle operator's manual*).
2. Unload weight from Aerator tray.
3. Remove Hairpin Cotter (**15**) and Hitch Pin (**13**).
4. Push Aerator away from the towing vehicle.
5. Install Hitch Pin (**13**) and Hairpin Cotter (**15**) for storage.



USE AND CARE

USAGE



CAUTION: AVOID INJURY!

Avoid damage to tines. Do not tow the aerator across concrete or asphalt driveways and walkways.

CAUTION: Excessive towed load can cause loss of control on slopes. Stopping distance increases with speed and the weight of the towed load.

CAUTION: Total towed weight must not exceed combined weight of towing vehicle, ballast and operator.

STORAGE



CAUTION: AVOID INJURY! THE AERATOR TINES ARE VERY SHARP.

Care should be taken when choosing a storage location for this product. Store Aerator in low traffic aisle ways.

- Store Aerator with tine points facing the wall or ground.
- Store Aerator on the ground or low to the ground.
- Do not store Aerator hanging from the wall, ceiling or with Tine points facing outward.
- Product packaging can be used to offer a protective area around the Tines.
- Drawbar is a trip hazard. Avoid leaving Drawbar in aisle ways and walking paths.

TINES



CAUTION: AVOID INJURY!

Openings in Tray allow access to Tines for cleaning and service. Exercise caution when working around Tray openings and avoid placing body parts into the openings.

Bagged weight material can fall through Tray Openings and be torn open or damaged by the Tines. Use solid weight or close Tray Openings with wood panel or by other suitable means.

- Weight should be added to the tray after attaching to the towing vehicle.
- Weight should be secured by rope, straps, or other suitable means to contain the weight in the tray.
- Maximum capacity of the Aerator Tray is 110 lbs.
- Tray Openings allow access to Tines for cleaning and service only and are not to be used in any other application.
- **Moderate soil moisture is important for proper tine penetration.**
 - *Extremely **DRY** conditions will not permit tine penetration and may damage the tines.*
 - *Extremely **WET** conditions will cause full penetration of tines (up to tine bearings). This condition will cut slots in the turf.*



REPLACEMENT TINES ARE AVAILABLE AND COME IN A MULTI-PACK

Part Number: **1019235**

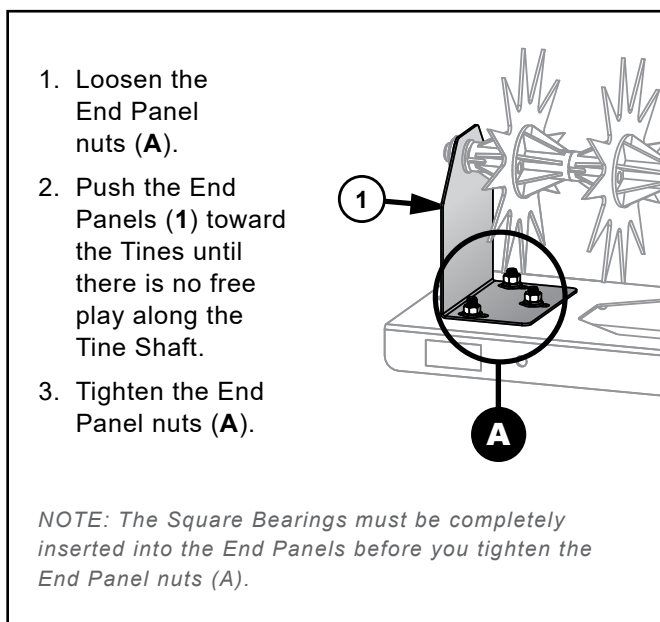
NOTE: An extra tine may be included.

USE AND CARE

MAINTENANCE



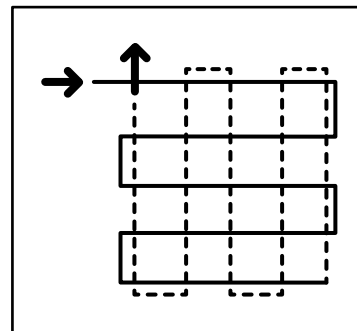
- The key to years of trouble-free service is to keep your Aerator clean and dry.
- After the first 30 minutes of use, check all fasteners for tightness. Thereafter, periodically check all fasteners for tightness.
- Tines are manufactured with galvanized steel to resist wear of abrasive soil. Striking objects can cause Tines to curl or break. Contact Brinly-Hardy customer service department to purchase replacement Tines.
- Apply a light coat of oil on tines after use to prevent rust.
- For rust appearing on painted surfaces, sand lightly and paint affected area with enamel.
- Periodically remove debris that builds up between Tines.
- Apply lubricating oil at each tine bearing and axle bearing before use.
- After use, the Tine and Tine Bearings may become loose on the Tine Shaft. Should this occur, remove the looseness as follows:



FREQUENCY

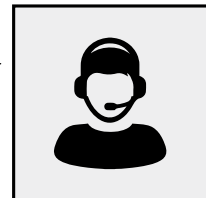
Lawn aeration is not accomplished in a single pass. It will normally take several passes over the lawn.

Alternating the direction by 90 degrees will improve the aeration effect. The Aerator may be used in an independent operation or may be used when mowing your lawn.



SERVICE

QUALITY CONTINUES WITH QUALITY SERVICE



If you have installation questions, are missing parts or need replacement parts, don't go back to the store!

Please find your product serial number and model number, then contact our Customer Service department:



In North America and Canada call
Toll-Free: **877-728-8224**



Chat online: **www.brinly.com**



Email: **customerservice@brinly.com**

ONLINE: BRINLY.COM

Additional info and videos are available on our website. Please visit the URL above OR scan this QR code.

SA-401BH
SA-401BH-A



SINCE 1839
BRINLY
MANUFACTURER'S LIMITED WARRANTY
AERATORS

The limited warranty set forth below is given by Brinly-Hardy Company with respect to new merchandise purchased and used in the United States (its possessions and territories) and Canada.

Brinly-Hardy Company warrants the products listed below against defects in material and workmanship, and will at its option, repair or replace, free of charge, any part found to be defective in materials or workmanship. This limited warranty shall only apply if this product has been assembled, operated, and maintained in accordance with the Operator's manual furnished with the product, and has not been subject to misuse, abuse, commercial use, neglect, accident, improper maintenance, alteration, vandalism, theft, fire, water, or damage because of other peril or natural disaster.

Parts found to be defective within the warranty period will be replaced at our expense. Our obligation under this warranty is expressly limited to the replacement or repair, at our option, of parts found to be defective in material and workmanship.

HOW TO OBTAIN SERVICE: Warranty parts replacements are available, only with proof of purchase, through our Customer Service Department. Call 877-728-8224.

This limited warranty does not provide coverage in the following cases:

- a. Routine maintenance items such as lubricants & filters.
- b. Normal deterioration of exterior finish due to use or exposure.
- c. Transportation and/or labor charges.
- d. The warranty does not include commercial and/or rental use.

No implied warranty, including any implied warranty of merchantability of fitness for a particular purpose, applies after the applicable period of express written warranty above as to the part as identified below. No other express warranty whether written or oral, except as mentioned above, given by any person or entity, including a dealer or retailer, with respect to any product, shall bind Brinly-Hardy Co. During the period of the warranty, the exclusive remedy is repair or replacement of the product as set forth above.

The provisions as set forth in this warranty provide the sole and exclusive remedy arising from the sale. Brinly-Hardy Co. shall not be liable for incidental or consequential loss or damage including, without limitation, expenses incurred for substitute or replacement lawn care services or for rental expenses to temporarily replace a warranted product.

Some states do not allow the exclusion or limitation of incidental or consequential damages, or limitations on how long an implied warranty lasts, so the above exclusions or limitations may not apply to you.

During the warranty period, the exclusive remedy is replacement of the part. In no event shall recovery of any kind be greater than the amount of the purchase price of the product sold. Alteration of safety features of the product shall void this warranty. You assume the risk and liability for loss, damage, or injury to you and your property and/or to others and their property arising out of the misuse or inability

to use this product. **NOTE:** *This limited warranty shall not extend to anyone other than the original purchaser or to the person for whom it was purchased as a gift.*

This limited warranty lasts as long you own your product purchased from an authorized seller. **Coverage terminates once you sell or otherwise transfer the product.**

This limited warranty does not cover any purchaser other than the original purchaser of the product, nor does it cover any product purchased from an unauthorized third-party. If you are not the original purchaser of this product, your product is not covered by our limited warranty and you take the product "AS IS" and "with all faults."

We may require proof of purchase from you demonstrating that you are the original purchaser of the product, purchased the product from an authorized dealer, and are eligible to make a valid claim under this limited warranty.

How state law relates to this warranty: This limited warranty gives you specific legal rights, and you may also have other rights which vary from state to state.

IMPORTANT:

The Warranty period stated below begins with the proof of purchase. Without the proof of purchase, the Warranty period begins from the date of manufacture determined by the serial number manufacturing date. All parts replaced under warranty will be considered as part of the original product, and any warranty on the replaced parts will expire coincident with the original product warranty.

WARRANTY PERIOD:

See applicable parts listed below.

Standard / Residential Use:

Steel Frame & Steel Parts	2 years
Stars & Plugs	90 days
Tires / Wheels	90 days
Drive: Chain & Sprocket	90 days

All other normal wear parts or component failures will be covered on this product for a period of 90 days.

If this equipment is being used in a commercial application and / or for multiple properties, the warranty is 90 days after purchase for all parts.